



TIIG
INJURY SURVEILLANCE IN THE NORTH WEST OF ENGLAND

COUNTESS OF CHESTER HOSPITAL EMERGENCY DEPARTMENT

MONTHLY BULLETIN: OCTOBER 2013 TO SEPTEMBER 2014

This bulletin provides a breakdown of all injury attendances to the Countess of Chester Hospital Emergency Department (ED) between October 2013 and September 2014.

During this twelve month period there were 14,897 injury attendances. The month with the highest number of attendances, calculated as a daily average, was October 2014 (57 per day) compared to August 2014, the month with the fewest (34 per day; **Figure 1**).

For all months there were more male (55%) injury attendances than female presenting at Countess of Chester Hospital ED (**Figure 1**). **Figure 2** presents the age group of injury attendances. Approximately one-third (32%) of injury attendances were made by those aged between 30 and 59 years while 18 to 29 year olds accounted for one-quarter (25%) of attendances.

Table 1 details the injury group for attendances to the Countess of Chester Hospital ED. Just under three-quarters (73%) of injury attendances were classified as other injury while just under one in ten (9%) were recorded as road traffic collisions (RTCs) and 7% as sports injuries. Six per cent of presentations were due to deliberate self-harm (DSH) and 5% of attendees sustained assault-related injuries.

Table 2 presents injury attendances by incident location. Over four in ten (43%) occurred in the home while 14% occurred in a public place and 8% occurred at work.

Table 3 shows the discharge destination of injury attendances. Just under half (49%) of attendees were discharged with no further treatment required. Fifteen per cent were discharged to the care of their General Practitioner (GP), 11% left the department having refused treatment and 10% were referred to the fracture clinic.

Assault attendances

There were 684 assault attendances to the Countess of Chester Hospital ED between October 2013 and September 2014.

Assault attendees presenting to the department were mainly male (70%) and over half (53%) were aged between 18 and 29 years.

Table 4 shows the primary assault location was recorded as other location, which accounted for one-third (33%) of assault attendances. Three in ten (30%) occurred in a public place while 17% occurred in the home and 12% occurred in licensed premises.

Figure 1: ED injury attendances by gender and month, October 2013 to September 2014

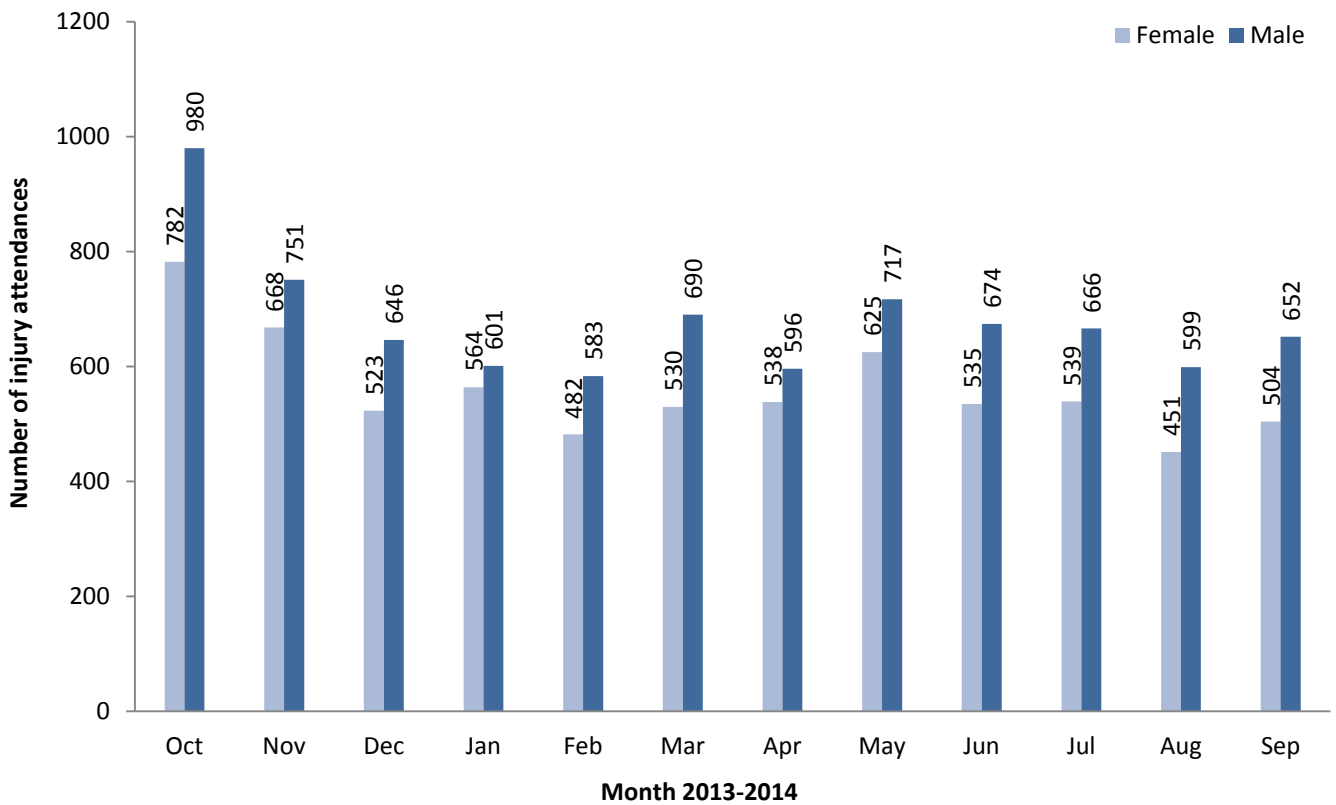


Figure 2: ED injury attendances by age group and month, October 2013 to September 2014

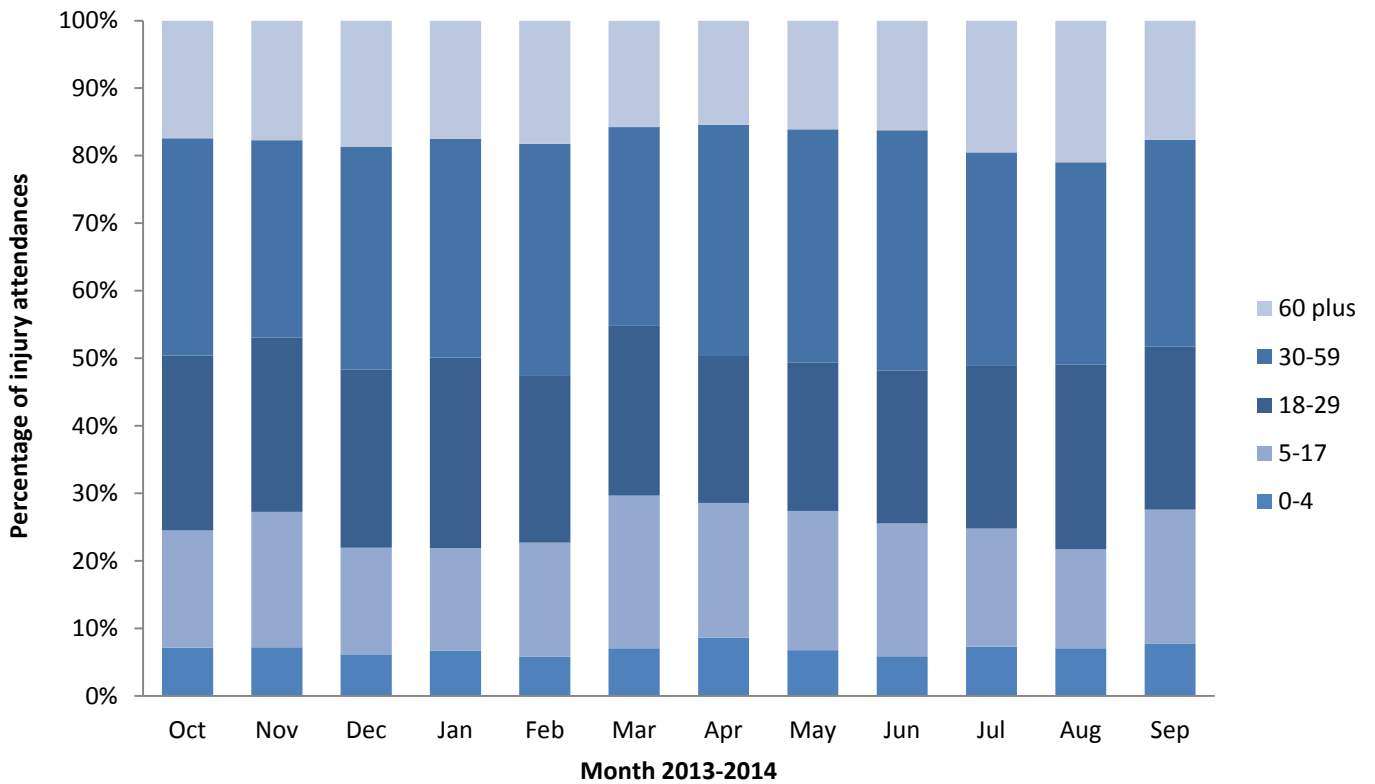


Table 1: ED injury attendances by injury group and month, October 2013 to September 2014

Injury group	Oct	Nov	Dec	Jan	Feb	Mar	Apr	May	Jun	Jul	Aug	Sep	Total	%
Other	1356	1037	822	850	725	885	842	1002	880	891	823	833	10946	73%
RTC	121	130	108	111	139	95	97	118	123	125	98	108	1373	9%
Sport injury	127	113	73	67	78	108	79	91	75	73	45	107	1036	7%
DSH	69	81	89	77	77	72	74	86	73	64	38	58	858	6%
Assault	89	58	78	60	46	60	42	45	58	52	46	50	684	5%
Total	1762	1419	1170	1165	1065	1220	1134	1342	1209	1205	1050	1156	14897	100%

Table 2: ED injury attendances by incident location and month, October 2013 to September 2014¹

Incident location	Oct	Nov	Dec	Jan	Feb	Mar	Apr	May	Jun	Jul	Aug	Sep	Total	%
Home	736	605	509	536	446	472	496	585	548	545	459	472	6409	43%
Other	517	377	375	328	331	385	336	389	310	305	322	336	4311	29%
Public	186	186	128	140	145	153	170	184	192	192	169	171	2016	14%
Work	195	126	86	94	69	98	80	101	100	94	90	92	1225	8%
Educational establishment	103	104	52	45	50	98	39	71	47	<55	***	53	714	5%
Licenced premises	<25	<20	<20	<25	24	<15	<15	12	<15	17	7	32	207	1%
Countess of Chester Hospital	***	***	***	***	0	***	***	0	***	***	***	0	15	0%
Total	1762	1419	1170	1165	1065	1220	1134	1342	1209	1205	1050	1156	14897	100%

Table 3: ED injury attendances by discharge destination and month, October 2013 to September 2014¹

Discharge destination	Oct	Nov	Dec	Jan	Feb	Mar	Apr	May	Jun	Jul	Aug	Sep	Total	%
Discharged – did not require any follow-up treatment	980	707	544	536	476	613	530	654	564	544	536	559	7243	49%
Discharged – follow-up treatment to be provided by GP	242	185	179	194	179	172	164	175	164	207	127	176	2164	15%
Left department having refused treatment	103	153	147	97	113	121	137	151	151	145	133	125	1576	11%
Referred to fracture clinic	184	161	119	112	96	135	116	118	139	117	103	117	1517	10%
Admitted to a hospital bed	92	88	79	98	86	76	79	107	88	81	76	90	1040	7%
Referred to other out-patient clinic	51	43	26	30	34	40	47	43	36	38	28	34	450	3%
Left department before being seen for treatment	41	21	31	31	34	23	27	37	36	35	20	28	364	2%
Referred to other health care professional	49	38	30	35	21	31	26	41	21	30	19	19	360	2%
Transferred to other health care provider	20	<25	15	<20	8	<10	8	16	10	8	<10	<10	145	1%
Unknown	0	0	0	14	18	0	0	0	0	0	0	0	32	0%
Died in department	0	***	0	***	0	***	0	0	0	0	***	***	6	0%
Total	1762	1419	1170	1165	1065	1220	1134	1342	1209	1205	1050	1156	14897	100%

¹ Please note that all numbers less than five have been suppressed (with ***) in line with patient confidentiality. If there is only one number less than five in a category then two numbers have been suppressed to prevent back calculations from totals.

Note that source of referral is absent from this report due to an issue with the ED's data. An updated report including referral source will be made available following the retrieval of data from the ED.

ASSAULTS

Table 4: ED assault attendances by incident location and month, October 2013 to September 2014²

Incident location	Oct	Nov	Dec	Jan	Feb	Mar	Apr	May	Jun	Jul	Aug	Sep	Total	%
Other	33	18	32	18	13	22	9	15	23	14	13	15	225	33%
Public place	23	17	18	19	13	16	19	16	18	16	20	9	204	30%
Home	14	7	15	13	8	11	9	8	6	10	8	9	118	17%
Licensed premises	10	8	7	5	9	7	***	***	7	<10	***	11	80	12%
Work	5	***	***	***	***	***	***	0	***	***	***	<10	32	5%
Educational establishment	***	<10	***	***	***	***	0	***	***	0	0	***	21	3%
Countess of Chester Hospital	***	0	0	0	0	0	***	0	0	0	***	0	***	0%
Unknown	0	0	0	***	0	0	0	0	0	0	0	0	***	0%
Total	89	58	78	60	46	60	42	45	58	52	46	50	684	100%

Published January 2015

Trauma and Injury Intelligence Group

Centre for Public Health, Faculty of Education, Health and Community, Liverpool John Moores University,
2nd Floor, Henry Cotton Building, Liverpool L3 2ET

T: 0151 231 4498 | E: tiig@ljmu.ac.uk | W: www.tiig.info and www.cph.org.uk | Twitter: www.twitter.com/tiig_cph

² Please note that all numbers less than five have been suppressed (with ***) in line with patient confidentiality. If there is only one number less than five in a category then two numbers have been suppressed to prevent back calculations from totals.